



Hume Whittlesea ^{LLEN}

E-Bulletin
June 2008

Welcome to this months E-Bulletin!

- Hume Whittlesea LLEN's regular E-Bulletin keeps you up to date with the LLEN's and related activities across the Cities of Hume and Whittlesea. Comments and feedback are always welcome.
- If you would like to become a HWLLEN member and/or would like to place information in our monthly E-Bulletin, please contact Hulya at the Hume Whittlesea LLEN Office.

HWLLEN 2007 Annual General Meeting (AGM)

Hume Whittlesea LLEN held its Annual General Meeting on May 15th at Kangan Batman TAFE. At this well attended meeting our Annual Report was presented by HWLLEN Chair Peter Harrison and the Financial Report was presented by Treasurer Frank Hardy.

Guest Speaker Mick Butera outlined the work of Northlink NIETL and updated the members present on their 'Growing Melbourne's North' study.

The newly elected Committee of Management for 2008 was also announced. Members are:

Committee Member	Organisation
Peter Hendrickson	Sunbury College
Keith Miller	Peter Lalor Secondary College
Peter Harrison	Kangan Batman TAFE
Fran O'Neil	NMIT
Jenny Brodie	Glenroy Neighbourhood Learning Centre
Bill Dear	Workforce Plus
Trish van Lint	RMIT
David Peake	E-Cubed
Peter Krausz	Salesian Christian College
Christine Williams	Graphics Unlimited
David Redfearn	Australian Industry Group
John Fry	City of Whittlesea
George Osborne	Hume City Council
Frank Hardy	Career Advice Australia
Natasha Cooper	The Smith Family
Vicki Cooper	City of Whittlesea
Chris Galea	Holden

Any member who has not received a copy of our Annual Report and would like one sent to them please contact Hulya on hulya.k@hwllen.com.au

What's Inside:

HWLLEN 2007 AGM	1
Hume Youth Commitment (HYC) Update	2
Proposed Structure & Activities of HYC	3
Year 10 VCE Expo and VCE evening at Latrobe University	3
Whittlesea Youth Commitment (WYC) Celebrating 10 Years	4
WYC Spirit of Co-operation	4
Taking Education Forward in Whittlesea	4
"Making Choices" Breakfast	5
Whittlesea VCAL Cluster Group	5
Whittlesea SRC Cluster Group	5
Finding MY Place	5
Trade Training Centres discussions	6
Sunbury/Gisborne Careers & Employment Expo	6
Hume & Whittlesea School Leavers Guide	6



Hume Youth Commitment Update @ June 2008

Two of the three specialised teams have held their first meetings with the following outcomes:

Skills & Pathways Team

Skills & Pathways team (Industry & Education Links) is being led by Frank Hardy LCP in partnership with Zina Miceli – RICA. The team have met twice and formed into smaller working parties supporting particular projects.

Working Groups have been formed on the following prioritised projects:

Organising a Careers & Employment Seminar

Working Group led by Zina Miceli – RICA,

Increasing Parental Engagement

Working Group led by Frank Hardy – LCP

A Workshop for Industry re ASbA's

Working group led by Ali Akkus – Apprenticeships Plus

Other projects still being considered:

- A regional resource based on BNLLLEN's guide "Support Options for YP in Transition to Employment and Education"
- A combination Employment Opportunities Fair and Leading Youth to Employment
- Links to HCC Strategies – Parental Workshops

Transitions Team

Transitions Team (school based team) is being led by Youth Pathways – Youth Projects Inc. Youth Pathways has just been restructured and has a new team leader.

The first meeting scheduled for 12th June 08 was postponed due to the restructure. It is expected that the first meeting of this team will take place in July 08 (early Term 3).

Out of School Options Team

Out of School Options team (early school leavers) is being led by Michelle Hall – The Salvation Army Crossroads –YTSI team. First meeting was held 2nd June.

Outcomes:

- Recommendations to explore/develop a consistent mapping tool for disengaged young people. (Suggested VCAL Link model)
- Discussion about accreditation for non recognised courses that these young people often attend.
- Smoother referral pathways for young people – strengthening relationships
- Sharing of info – a more localised resource guide for the team.
- Production of a referral poster...

Community Team

The broader Community Team will have its first meeting on:

Tuesday, 29th July 2008

1 - 3pm

Kangan Batman TAFE

Broadmeadows Campus - Council Room 1

Lunch and networking at 12.30pm

RSVP's to Hulya Kazanaksu at HWLLEN via email:

hulya.k@hwllen.com.au for catering purposes.

The Community Team is open to all interested parties and will discuss some of the outcomes of the 3 specialised teams and the impacts for strategic planning in Hume.

If people would like further information on the Hume Youth Commitment or to nominate for a specialised team please contact:

Nicky Leitch, HWLLEN Pathways Development Officer

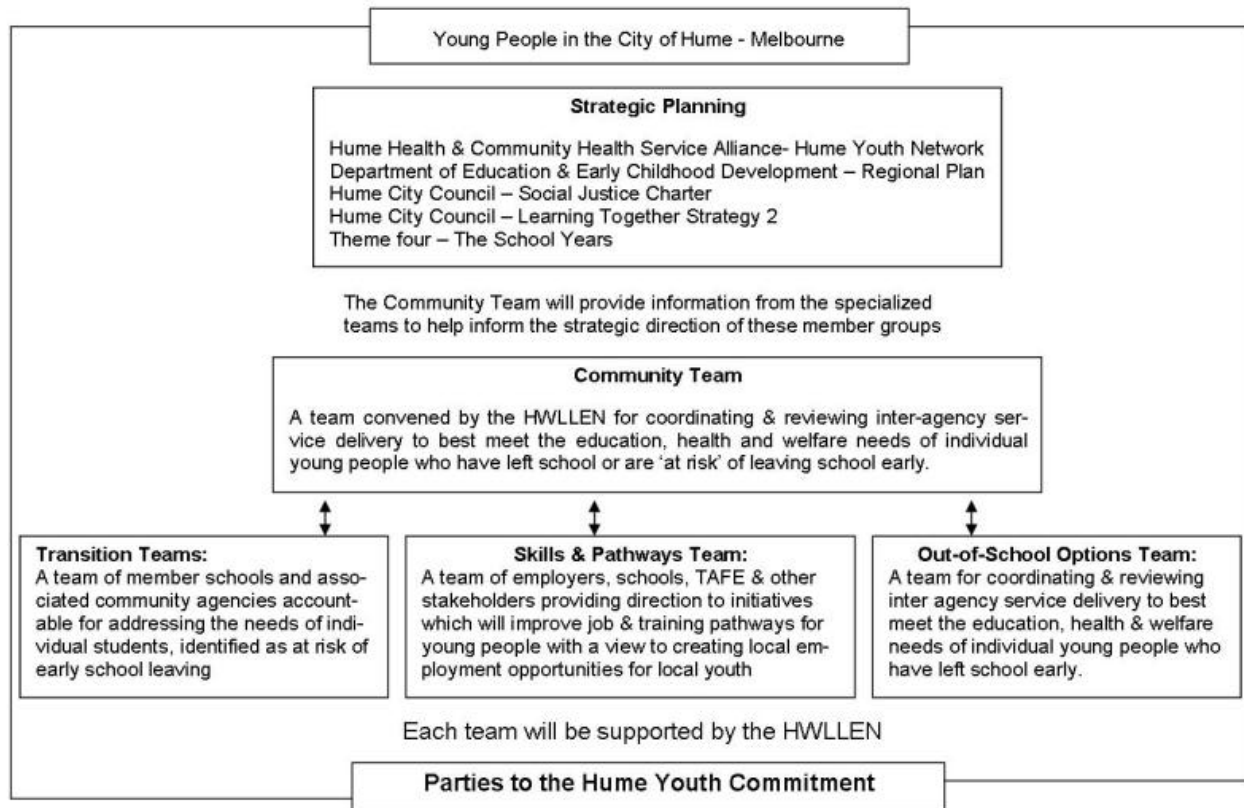
T: 9309 7444 or M:0438 522 163

E: nicky.l@hwllen.com.au



Structure and Activities of Hume Youth Commitment

Whilst at all times maintaining the central focus on the individual young person the Hume Youth Commitment initiative will operate within the following structure:



Year 10 VCE Expo and VCE evening at Latrobe University



YEAR 10 VCE INFORMATION EVENING

Year 10 students and their parents are invited to an information evening about pathways to university, prerequisite studies for university courses, range of courses available at La Trobe, selection and transition to university.

Wednesday 30 July, 6pm – 8pm
 Melbourne (Bundoora)

Register now. For more information
1300 135 045
latrobe.edu.au/study/events

Infinite Possibilities™



Whittlesea Youth Commitment Celebrating 10 Years

This year the Whittlesea Youth Commitment is celebrating its 10th year of collaborative work between stakeholders. One of our events is a Community Team Forum.

In reflecting over the past 10 years and in looking to the future we are interested in the issue of Environmental Sustainability and how this relates to young people and their future employment.

Lesley Tobin, from the Dusseldorp Skills Forum will speak to the group on the 'Y - Green' Project.



The Forum will be held on:

Thursday, 21st of August
2 - 5 p.m.
Venue to be advised.

If you have any inquires please contact one of our Pathways Development Officer's on 9925 7569 (Kim Stadtmiller) or 9925 7569 (Lucy Thornton).

WYC Spirit of Co-operation

WYC Spirit of Co-operation Re-signing Agreement & 10 Years On Celebration. This year the Re-signing of the Spirit of Co-operation Agreement by Stakeholders will mark the 10th Year of collaborative work of the members of the Whittlesea Youth Commitment.

The celebration will take place on:

Thursday, 30th of October
City of Whittlesea Civic Centre
4 - 6 p.m.

If you have any inquires please contact one of our Pathways Development Officer's on 9925 7569 (Kim Stadtmiller) or 9925 7569 (Lucy Thornton).

Taking Education Forward in Whittlesea

Taking Education Forward in Whittlesea –Learning from International Research & the Broadmeadows Experience.

The Whittlesea Youth Commitment/HWLLLEN will be hosting a breakfast forum for school principals, local government and community agencies on:

Wednesday, July 30th 2008
8 – 11a.m.

Plenty Ranges Arts & Convention Centre
South Morang.

The facilitator of this forum, Professor Bruce Wilson, Head of School of Global Studies, Social Science & Planning, RMIT University, will offer a dual perspective on successful communities, and on what they have done to improve opportunities for their young people. First, he will give the participants access to the latest and most positive, international thinking on the successful interactions of local example of regional regeneration, followed by a practical discussion as to how we can translate both international and national practices into the special conditions and needs of our own region.

Professor Wilson's presentation will be complemented by Susan Drummond, Senior Research Officer, City of Whittlesea, who will report upon the local reasons for youth disaffection from school. The local response to the issue of disengagement from school will be addressed by Melanie Hanlan in her role as Transition Broker Supervisor.

For further information or to register your attendance, please contact:

Kim Stadtmiller
Pathways Development Officer
T: 9925 7491

E: kim.stadtmiller@rmit.edu.au



“Making Choices” Breakfast

The Hume Whittlesea LLEN is holding two “Making Choices” breakfasts in August 2008. This will be for year 10 students from 31 schools across the Hume and Whittlesea regions. A young women’s breakfast is on 12 August and a young men’s breakfast is on 26 August 2008.

The aim of the breakfast is to open the young people’s minds to career options that they may not have previously considered. We will focus on the skill shortages in the north, where there will be employment in the future. Statistics show that manufacturing is still a major employer in the north, and we wish to expose the young people’s minds to misconceptions they and their parents may have regarding careers in manufacturing. The 6 areas of skill shortages in the north have been identified as, transport and distribution, manufacturing, construction, property services, business services (e.g. accounting), and community services and health. We will target these areas when inviting professionals.

The event will begin with inspirational keynote speakers, discussing their own experiences from school to further study, training and employment and will be followed by a series of breakout workshops during which time students will meet with the participating professionals. A range of professionals from a broad sector of local industry will be invited to participate in the event and will focus on the career opportunities available in the north. The students will meet with a number of professionals from a variety of industry sectors and will be encouraged to explore the different facets and pathways of specific careers. Prompts will be provided to ensure effective communication takes place between the young person and the professional.

Whittlesea VCAL Cluster Group

At the last Whittlesea VCAL Cluster Group meeting held May 28, members tabled sample programs for the resource pool and discussed the content for the induction manual for new VCAL staff.

The next meeting is scheduled to be held Wednesday, July 23 from 9.30 – 11.30 at RMIT Bundoora.

For further information, please contact, Kim Stadtmiller on 9925 7491 or email kim.stadtmiller@rmit.edu.au

Whittlesea SRC Cluster Group

The Whittlesea SRC Cluster group last met on Monday, June 16 at Kildonan UnitingCare. Roger Holdsworth, Senior Research Associate, University of Melbourne, facilitated the first session providing strategies on ‘Tackling an Issue’, followed by a PD session for SRC supervising staff. James Tonson, VicSRC Project Officer, spoke about the VicSRC Congress in August, Sarah Carew, a student from Whittlesea Secondary College, gave an inspirational talk about youth participation and student action, and Clare Wynne, Kildonan, spoke about the Whittlesea YAC project. The meeting was attended by 18 students with representation from 5 schools.

The next meeting is scheduled to be held in Week 4, Term 3.

Finding MY Place Program

15 students from Lalor North, 11 from Epping and 11 from Thomastown Secondary Colleges have participated in the program this term. Sessions have focused on life skills and employability skills including an industry visit to Mushroom Exchange. Organisations involved in providing workshops include: Centrelink, Sarina Russo, Whittlesea Community Legal Services, NMIT, Kangan Batman, Apprenticeships Plus, and the City of Whittlesea Marketing and Communications. The Mayor, Cr Elizabeth Nealy, attended the final session to congratulate the students for their participation in the program and to distribute certificates.

The program, Finding MY Place, is facilitated by the collaborative partnership of Yarra Plenty Regional Library and WYC/HWLLLEN. For further information, please contact Kim Stadtmiller by email kim.stadtmiller@rmit.edu.au or 9925 7491 or Kerri Pleydell Sander by email kpsander@yprl.vic.gov.au or 9401 0745.



Trade Training Centre discussions

Hume Whittlesea LLEN has been involved in discussions with a range of stakeholders across the Cities of Hume and Whittlesea on the Trade Training Centre initiative announced by the Federal Government shortly after last year's election.

Discussions are in the early stages of development and centre around the formation of consortiums, possible models and maximising the benefit to young people in the north.

If you have any questions please contact Bill Threlfall on Ph: 9309 8155 or E: bill.t@hwllen.com.au

Sunbury/Gisborne Careers & Employment Expo

Tuesday, 22nd July 2008
Memorial Hall,
Barkly St, Sunbury

The expo presents young people and their parents with the opportunity to speak to:

- Employment Agencies
- Industry Associations
- University, TAFE & Private Providers

This FREE Expo provides an invaluable opportunity to assist young people with their future pathways.

It is proudly presented by the Careers/Pathways staff at Sunbury, Gisborne, Salesian & Sunbury Downs Colleges.

Hume and Whittlesea School Leavers Guide

The School Leavers Guides for Hume and Whittlesea are currently being updated for printing.

If you have any additions or changes to be made please contact Kate Symons on kate.symons@rmit.edu.au.

Hume Whittlesea LLEN Project Team

Bill Threlfall
Executive Officer
Ph: 9309 8155
bill.t@hwllen.com.au

Nicky Leitch
Pathways Development Officer
(Hume)
Ph: 9309 7444
nicky.l@hwllen.com.au

Lucy Thornton
Pathways Development Officer
(Whittlesea)
Ph: 9925 7569
lucy.thornton@rmit.edu.au

Hulya Kazanaksu
Administrative Officer
Ph: 9309 5500
hulya.k@hwllen.com.au

Kate Symons
Special Projects Officer
Ph: 9925 7569
kate.symons@rmit.edu.au

Kim Stadtmiller
Pathways Development Officer
(Whittlesea)
Ph: 9925 7491
kim.stadtmiller@rmit.edu.au